

TRANSPARENCY MASTERS

Adopters of this book are granted permission to reproduce them for class use.



CAVEAT EMPTOR

There are two cars built in Sweden. Before you buy theirs, drive ours.

When people who know cars think about Swedish cars, they think of them as being strong and durable. And conquering some of the toughest driving conditions in the world.

But, unfortunately, when most people think about buying a Swedish car, the one they think about usually isn't ours. (Even though ours doesn't cost any more.)

Ours is the SAAB 99E. It's strong and durable. But it's a lot different from their car.

Our car has Front-Wheel Drive for better traction, stability and handling.

It has a 1.85 liter, fuel-injected, 4 cylinder, overhead cam engine as standard in every car. 4-speed transmission is standard too. Or you can get a 3-speed automatic (optional).

Our car has four-wheel disc brakes and dual-diagonal braking system so you can stop straight and fast every time.

It has a wide stance. (About 55 inches.) So it rides and handles like a sports car.

Outside, our car is smaller than a lot of "small" cars. 172" overall length, 57" overall width.

Inside, our car has bucket seats up front and a full five feet across in the back so you can easily accommodate five adults.

It has more headroom than a Rolls Royce and more room from the brake pedal to the back seat than a Mercedes 280. And it has factory air conditioning as an option.

There are a lot of other things that make our car different from their car. Like roll cage construction and a special "hot seat" for cold winter days.

So before you buy their car, stop by your nearest SAAB dealer and drive our car. The SAAB 99E. We think you'll buy it instead of theirs.

SAAB 99E

"MY DAD IS BETTER than YOUR DAD"

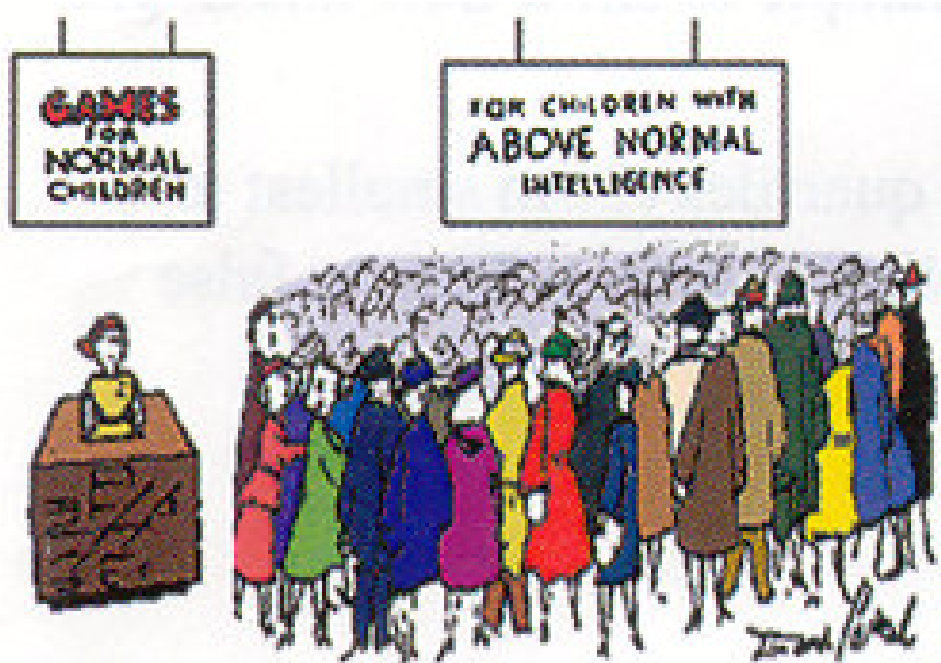


PEANUTS Reprinted by permission of UFS, Inc.

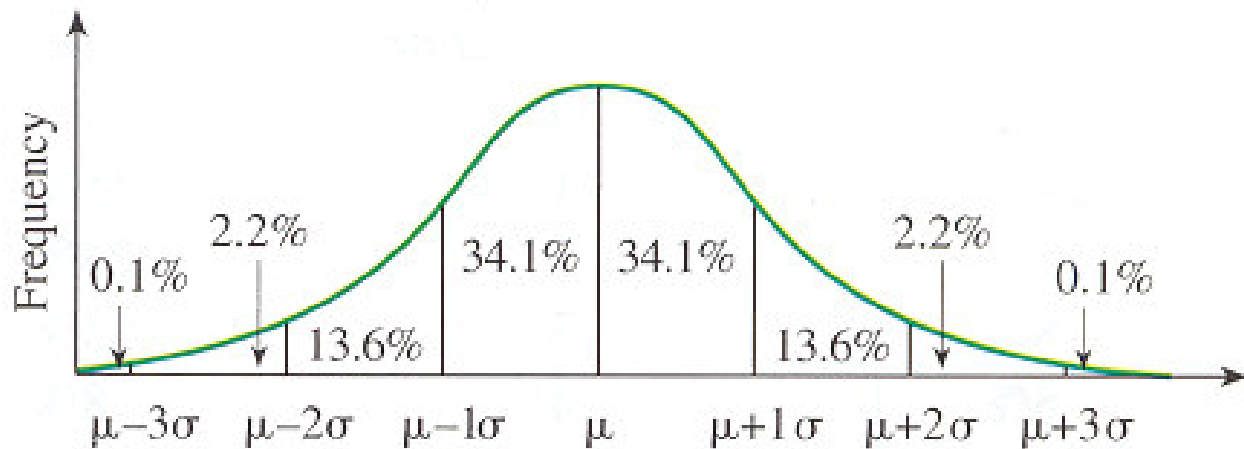
Do you suppose that Violet's dad bowled better on Monday nights (185 avg) than on Thursday nights (170 avg)? Don't be too hasty to say "yes" before you look at the scores that make up these averages:

	<i>Monday night</i>	<i>Thursday night</i>
Game 1	175	180
Game 2	150	130
Game 3	160	161
Game 4	180	185
Game 5	160	163
Game 6	183	185
Game 7	<u>287</u>	<u>186</u>
Totals	1,295	1,190

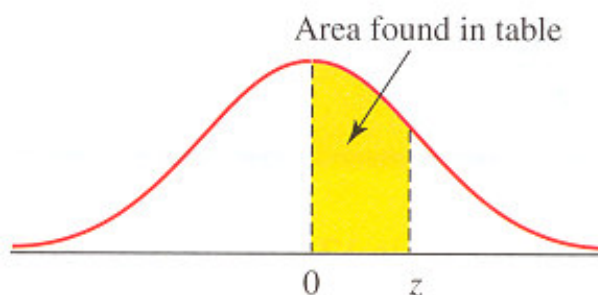
Are you **normal**?



Cartoon by David Pascal



Z-scores



z	0.00	0.01	0.02	0.03	0.04	0.05	0.06	0.07	0.08	0.09
0.0	0.0000	0.0040	0.0080	0.0120	0.0160	0.0199	0.0239	0.0279	0.0319	0.0359
0.1	0.0398	0.0438	0.0478	0.0517	0.0557	0.0596	0.0636	0.0675	0.0714	0.0753
0.2	0.0793	0.0832	0.0871	0.0910	0.0948	0.0987	0.1026	0.1064	0.1103	0.1141
0.3	0.1179	0.1217	0.1255	0.1293	0.1331	0.1368	0.1406	0.1443	0.1480	0.1517
0.4	0.1554	0.1591	0.1628	0.1664	0.1700	0.1736	0.1772	0.1808	0.1844	0.1879
0.5	0.1915	0.1950	0.1985	0.2019	0.2054	0.2088	0.2123	0.2157	0.2190	0.2224
0.6	0.2257	0.2291	0.2324	0.2357	0.2389	0.2422	0.2454	0.2486	0.2517	0.2549
0.7	0.2580	0.2611	0.2642	0.2673	0.2704	0.2734	0.2764	0.2794	0.2823	0.2852
0.8	0.2881	0.2910	0.2939	0.2967	0.2995	0.3023	0.3051	0.3078	0.3106	0.3133
0.9	0.3159	0.3186	0.3212	0.3238	0.3264	0.3289	0.3315	0.3340	0.3365	0.3389
1.0	0.3413	0.3438	0.3461	0.3485	0.3508	0.3531	0.3554	0.3577	0.3599	0.3621
1.1	0.3643	0.3665	0.3686	0.3708	0.3729	0.3749	0.3770	0.3790	0.3810	0.3830
1.2	0.3849	0.3869	0.3888	0.3907	0.3925	0.3944	0.3962	0.3980	0.3997	0.4015
1.3	0.4032	0.4049	0.4066	0.4082	0.4099	0.4115	0.4131	0.4147	0.4162	0.4177
1.4	0.4192	0.4207	0.4222	0.4236	0.4251	0.4265	0.4279	0.4292	0.4306	0.4319
1.5	0.4332	0.4345	0.4357	0.4370	0.4382	0.4394	0.4406	0.4418	0.4429	0.4441
1.6	0.4452	0.4463	0.4474	0.4484	0.4495	0.4505	0.4515	0.4525	0.4535	0.4545
1.7	0.4554	0.4564	0.4573	0.4582	0.4591	0.4599	0.4608	0.4616	0.4625	0.4633
1.8	0.4641	0.4649	0.4656	0.4664	0.4671	0.4678	0.4686	0.4693	0.4699	0.4706
1.9	0.4713	0.4719	0.4726	0.4732	0.4738	0.4744	0.4750	0.4756	0.4761	0.4767
2.0	0.4772	0.4778	0.4783	0.4788	0.4793	0.4798	0.4803	0.4808	0.4812	0.4817
2.1	0.4821	0.4826	0.4830	0.4834	0.4838	0.4842	0.4846	0.4850	0.4854	0.4857
2.2	0.4861	0.4864	0.4868	0.4871	0.4875	0.4878	0.4881	0.4884	0.4887	0.4890
2.3	0.4893	0.4896	0.4898	0.4901	0.4904	0.4906	0.4909	0.4911	0.4913	0.4916
2.4	0.4918	0.4920	0.4922	0.4925	0.4927	0.4929	0.4931	0.4932	0.4934	0.4936
2.5	0.4938	0.4940	0.4941	0.4943	0.4945	0.4946	0.4948	0.4949	0.4951	0.4952
2.6	0.4953	0.4955	0.4956	0.4957	0.4959	0.4960	0.4961	0.4962	0.4963	0.4964
2.7	0.4965	0.4966	0.4967	0.4968	0.4969	0.4970	0.4971	0.4972	0.4973	0.4974
2.8	0.4974	0.4975	0.4976	0.4977	0.4977	0.4978	0.4979	0.4979	0.4980	0.4981
2.9	0.4981	0.4982	0.4982	0.4983	0.4984	0.4984	0.4985	0.4985	0.4986	0.4986
3.0	0.4987	0.4987	0.4987	0.4988	0.4988	0.4989	0.4989	0.4989	0.4990	0.4990

Note: For values of z above 3.09, use 0.4999.